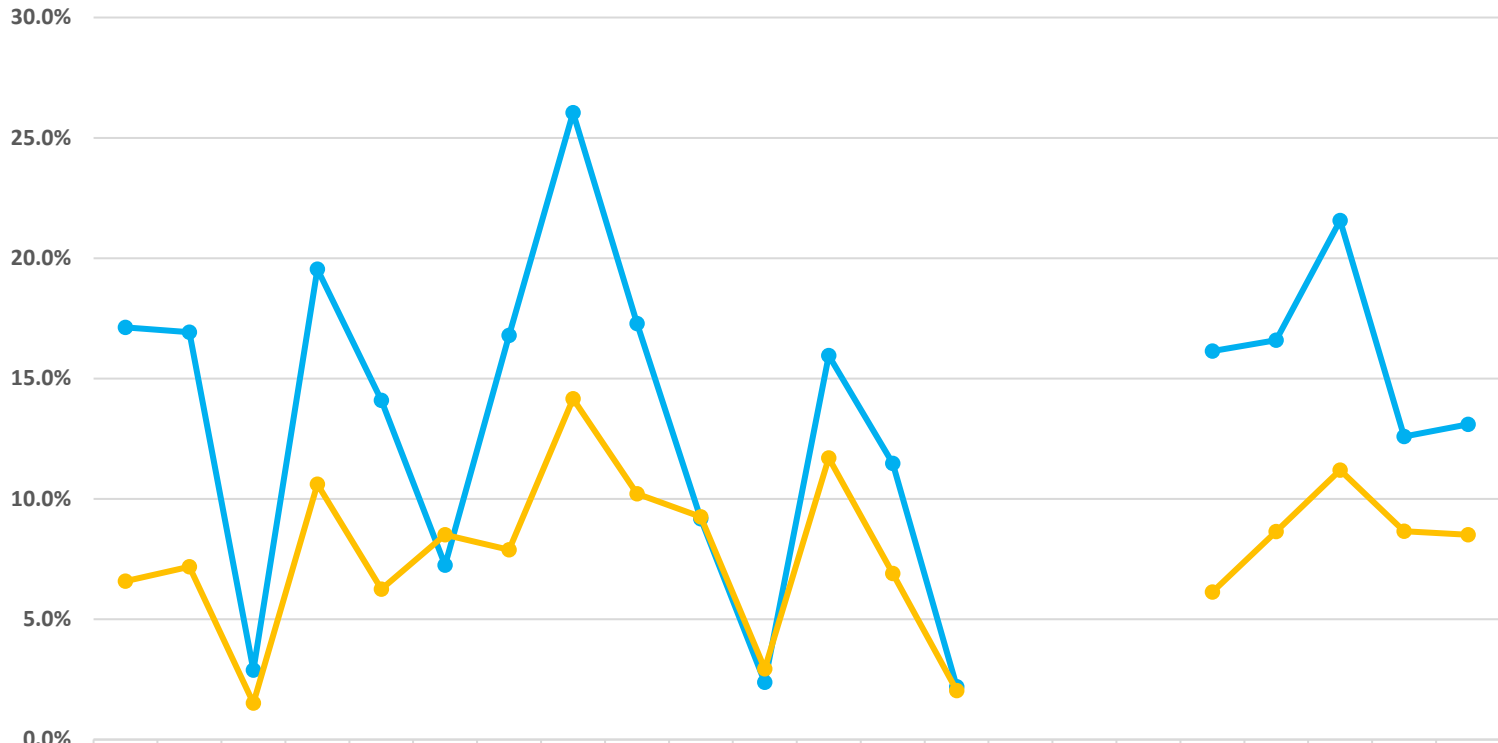




Semester & Annual Withdrawal Rates



Course WD Rate	17.1%	16.9%	2.9%	19.5%	14.1%	7.2%	16.8%	26.0%	17.3%	9.2%	2.4%	16.0%	11.5%	2.2%				16.1%	16.6%	21.6%	12.6%	13.1%
Complete WD Rate	6.6%	7.2%	1.5%	10.6%	6.3%	8.5%	7.9%	14.2%	10.2%	9.3%	2.9%	11.7%	6.9%	2.0%				6.1%	8.6%	11.2%	8.7%	8.5%